



CHIJ Our Lady of the Nativity

1257 Upper Serangoon Road Singapore 534793

• Tel: 6385 2455 • Fax: 6385 2012 • Email: chijoln@moe.edu.sg

24 January 2022

Ref: 2022OLN_0051

Dear Parents / Guardians,

SAFETY @ CHIJ OLN

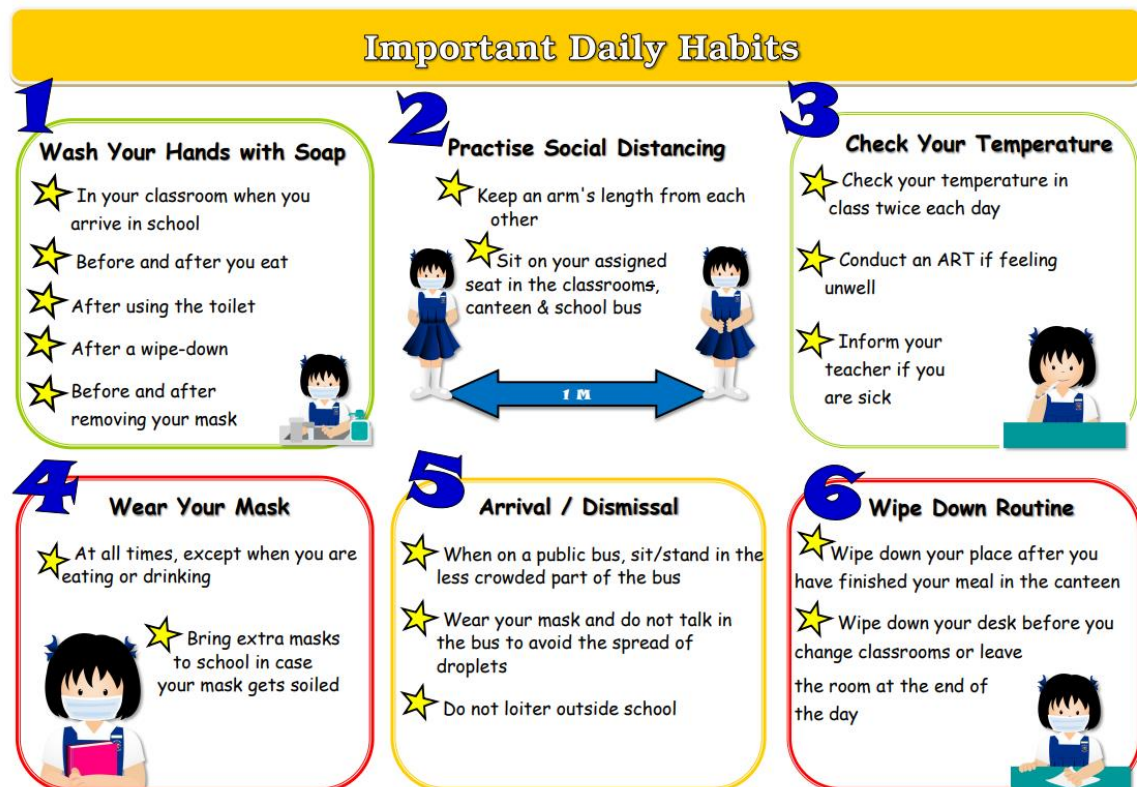
1. It is already Term 1, Week 4 and with the rising number of community cases, the health and safety of our students remains our top priority. We would like to take this opportunity to highlight some safety issues with regard to COVID-19 as well as the traffic situation.

SAFE DISTANCING MEASURES (SMM)

2. We appeal to everyone to adhere to the following SMM:

Adhering to SMMs & strict hygiene measures to stay safe

- a. All students and visitors must adhere to the SMMs put in place e.g. SafeEntry via Trace-Together (TT) token, visual screening and social distancing measures.
- b. Every student/visitor must wear a mask at all times in the school.
- c. Every student must bring her TT token daily and keep it with her at all time as MOH relies on the proximity data captured to identify the close contacts of a positive case. While your child can still attend school even if she has forgotten to bring her token with her, please emphasise to her the importance of doing so the next day. This will help keep her and other children safe. If the TT Token is faulty or the battery is low, please replace it. The venues are listed at <https://token.gowhere.gov.sg/>
- d. All students are to observe strict hygiene measures as captured in the following graphic. Do talk to your child about it too so that she is able to keep herself and her friends safe.



If You/Your Child Is Unwell or Identified as a Close Contact of a Positive Case

- a. Please do not send your child to school if she is unwell or has flu-like symptoms.
- b. No one is allowed to enter the school if unwell or on Stay Home Notice/ Isolation Order/Home Recovery.
- c. If your child is tested positive on ART or PCR test, please inform the school immediately.

- d. If you and/or your child has been identified as a close contact of a positive case, please adhere to the instructions issued by MOH and inform the school as well. Should your child be issued a Health Risk Warning (HRW) by MOH, she will be able to return to school only if she submits a daily ART negative test during the period of the HRW to her form teacher.

Picking Up Your Child from the Side Gates

- a. Please observe social distancing and maintain a safe distance from one another.
- b. Your child will be dismissed according to the times as communicated in OLN CONNECT (January). Do give way to other caregivers if your child has not been dismissed yet.
- c. Please do not block the path leading from the open-air carpark next to Block 466A to the bus stop and also to keep the overhead bridge stairs clear.
- d. Do help us to convey the message to your child's caregivers e.g. grandparents, domestic helpers etc. if they are the ones picking up your child.

TRAFFIC SAFETY GUIDELINES

3. The situation in and out of our school in the morning and during dismissal can be challenging. We would like to thank all parents and guardians for all your patience and understanding of the traffic conditions. Thank you too for cooperating closely with the directions given by our security team and traffic marshals. Let us continue to exercise and role model graciousness to everyone.
4. To ensure the safety of all and the smooth flow of traffic, please adhere to the following

Dropping Your Child/Ward Off via the Main Gate

- a. All students should be ready to alight from their parent's/guardian's vehicle once the vehicle arrives at the designated drop-off area.
- b. All students should have their belongings ready and be masked up before alighting from the vehicles. Do ensure your child/ward is clear as to when she can open the door to alight to prevent any accidents.
- c. All students should alight from the vehicles by themselves, as much as possible.
- d. All drivers are reminded to drive slowly and carefully, observing the speed limit in school at all times for the safety of everyone.
- e. Do drive along the designated route to the 5 drop-off points whenever possible, so that more vehicles are able to drop off at the same time, thus minimising waiting time for all.
- f. While you are on the main road and waiting to drive into school, please observe all traffic rules. Let us all be patient and considerate to one another.
- g. We would like to remind all drivers to alight students only at the school driveway drop-off points. There should be strictly be no dropping off at the bus stop outside school.

Dropping Your Child/Ward Off at the Open Space Carpark Outside Side Gate 2

- h. If you need to walk your child to Side Gate 2 or pick her up from Side Gate 2, please park your car in the official parking lots in the open-air / multi-storey carpark rather than wait alongside the road. This will ease the traffic flow and be much appreciated by other parents and residents.
5. Please be patient while using the road and refrain from sounding the horn. Let us be a blessing to others including the residents of blocks around the school and be responsible and gracious models for our young.
6. The well-being of all our students and staff is important to us. As such, we will continue to monitor the Covid-19 and traffic situations and do our best to manage them. We thank you for your cooperation and understanding.

Thank you & God bless,
CHIJ OLN

This is a computer-generated letter. No signature is required.

1257 Upper Serangoon Road Singapore 534793
Tel: 6385 2455 Fax: 6385 2012