



Meeting with Parents

Level: Primary 1

4 Jan 2022

Slides will be sent to you via PG by 3pm





- Briefing by Ms Christina Teo, Principal
- Briefing by teachers: P1 Class Matters & Q&A
- Briefing on ICT matters
- Viewing of recess
- End of programme: 1130 – 1145am

Parents' Briefing

CHIJ Our Lady of the Nativity





Mdm Nur Safikha
P1 Charity



Mdm Zuwarria Parvin
P1 Faith



Mrs Laura Stephen
P1 Grace



Mrs Lee Hwee Khoon
P1 Hope



Ms Aileen Yap
P1 Joy



Mrs Stephanie Ho
P1 Peace

Our P1 Team of Form Teachers

CHIJ Our Lady of the Nativity



Mrs Clara Ong
P1 Peace



Ms Oh Soo Hwee
P1 Truth





Mdm Hanizah
Year Head
(Lower Primary)



Mrs Annie Yuen
Vice-Principal
(ic Primary 1)

Key Personnel

CHIJ Our Lady of the Nativity





Mission

A CHIJ School is a Christ-centred school community where all work together for the promotion of Truth, Justice, Freedom and Love, with special reference to the needs of persons who are disadvantaged in any way.

Values:
Graciousness
Responsibility
Appreciation
Compassion
Integrity
Adaptability



Simple in virtue



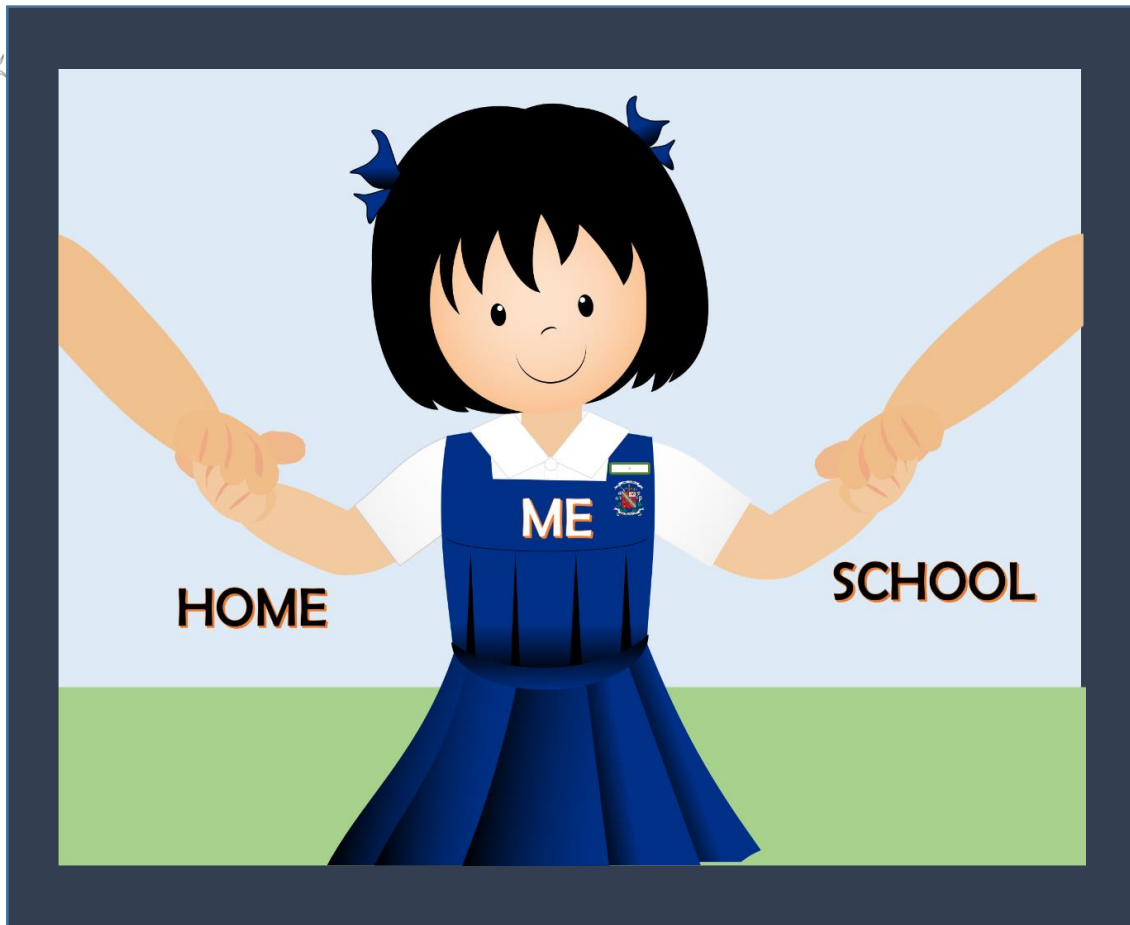
Steadfast in duty

Learning Dispositions:

- Collaborative
- Curious
- Reflective
- Resilient

Vision: Girls of Today for Tomorrow





- What we teach
- What we say
- How we behave
- What we see

Our girls come from a variety of homes





- What we teach
- What we say
- How we behave
- What we see



- Values Education & other lessons. Activities & events.
- Clarity of expectations
- Interaction of pupils with one another & teachers
- Opportunities to reflect on individual values

Teaching Character





Are you delivering your daughter's forgotten lunch or water bottle? Her homework, stationery, books, shoes, PE/CCA attire, etc.?

STOP.

LET YOUR CHILD LEARN RESPONSIBILITY.



Your daughter will learn to be independent and responsible if you don't bring these forgotten items to school to bail her out, even if you sincerely believe that it's your fault and not hers. She will not lose out, fail or miss out on her chance to become a contributing citizen of society just because she does not have the item you were thinking of delivering.

Let's work together to build the character and resilience of our next generation.

As stated in the School Organiser, our school will not be accepting the delivery of any forgotten items / birthday cakes / goodie bags.





Learning Social Responsibility

Important Daily Habits

1

Wash Your Hands with Soap

- ★ In your classroom when you arrive in school
- ★ Before and after you eat
- ★ After using the toilet
- ★ After a wipe-down
- ★ Before and after removing your mask



2

Practise Social Distancing

- ★ Keep an arm's length from each other
- ★ Sit on your assigned seat in the classrooms, canteen & school bus



3

Check Your Temperature

- ★ Check your temperature in class twice each day
- ★ See a doctor & stay home if you or anyone (6 years & older) staying in your home is sick
- ★ Inform your teacher if you are sick



4

Wear Your Mask

- ★ At all times, except when you are eating or drinking
- ★ Bring extra masks to school in case your mask gets soiled



5

Arrival / Dismissal

- ★ When on a public bus, sit/stand in the less crowded part of the bus
- ★ Wear your mask and do not talk in the bus to avoid the spread of droplets
- ★ Do not loiter outside school

6

Wipe Down Routine

- ★ Wipe down your place after you have finished your meal in the canteen
- ★ Wipe down your desk before you change classrooms or leave the room at the end of the day





Learning Social Emotional skills & confidence

CHIJ Our Lady of the Nativity

1. GREET US

"Good Morning,
Mr/Mdm..." or "Good
Afternoon, Mr/Mdm..."



2. STATE YOUR REQUEST

"May I use the phone in the General Office?"

"I am feeling unwell. Could you help me?"

3. THANK US

"Thank you,
Mr/Mdm ..."



Mr Wong Sin Cheong
Operations Manager



Ms Clarabelle Chu
Administration Manager



Ms Stephanie Quek
Administrative Executive



Ms Pee Lay Hoon
Administrative Executive



Mr Qabeer
Administrative Executive



Mdm Maliga
Corporate Support Officer



Mdm Ng Guek Eng
Corporate Support Officer



Mdm Tina
Corporate Support Officer



Mdm Indradevi
Office Support Officer



Mdm Wong Lai Chan
Office Support Officer



Mdm Koh Sok Hwee
Office Support Officer



Ms Wong Bee Leng
Office Support Officer



Mdm Sim Yang
Office Support Officer

Learning Dispositions



CURIOUS

- Let's see how this works.
- Could I find out how
- Is there another way to do this?

**Simple in Virtue,
Steadfast in Duty**



REFLECTIVE

- I made a mistake. Let's see how I can do it better.
- Could we try to do it this way?
- Thank you for your feedback. I will not make that mistake again.

**Simple in Virtue,
Steadfast in Duty**



RESILIENT

- Thank you but I can do this on my own.
- I can do this by myself. I do not need your help now.
- Let me try until I get it.

**Simple in Virtue,
Steadfast in Duty**



COLLABORATIVE

- What can I do to help?
- Let me share my idea now. I think ...
- I think your idea is great. Let's do that.

**Simple in Virtue,
Steadfast in Duty**





Learning through Doing



Learning through Reflection

Meaningful Monday: Reflection

Love your enemies, and do good, and lend, expecting nothing in return, and your reward will be great, and you will be sons of the Most High, for he is kind to the ungrateful and the evil. Be merciful, even as your Father is merciful.

Luke 6:35-36

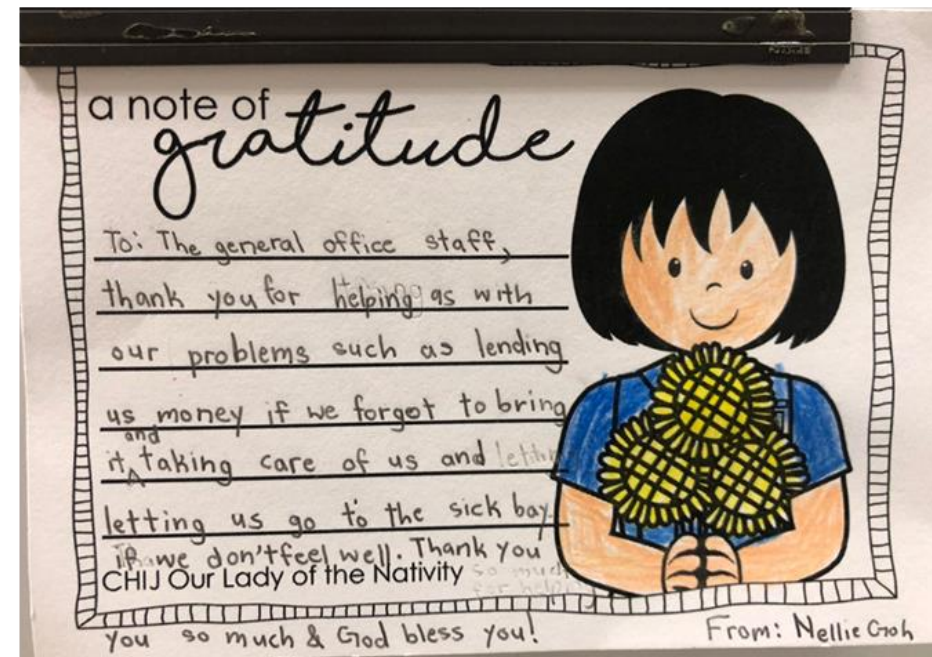


During this week.....

Do you meet people you may not like? Are there some classmates or family members that you find difficult to be nice to? How can you treat them kindly even if you don't like them?



We can be generous by lending them our stationery, saying a kind word or simply offering a listening ear.





What does this mean for the teacher and the parent?

- Make expectations known
- Establish routines
- Praise for effort and outcomes
- Step back and allow them to do it on their own
- Allow for natural consequences
- Being role models

Examples

- At recess, child will buy food on her own.
- At dismissal, teachers will set in place routines and gradually increase independence

Learning to be independent



Values

- Sr Deirdre O'Loan Award
- IJ Angel Award (includes school-based award for non-Singaporean)

Acts according to the IJ Mission and GRACIA values

Service

- Edusave EAGLES (Leadership & Service)
- Mother Mathilde Award (P6 Prefects, CCA leaders & Ambassadors)
- Laudato Si Award

Leads with initiative and serves with love

Co-Curricular Achievement

- Edusave EAGLES (Achievement)
- IJ OLN Sports Award
- NAPFA
- IJ OLN Aesthetics Award

Remains steadfast in the face of challenges

Curricular Achievement

- Mabel Dodampe Award (Proficiency in a Subject Award)
- Good Progress (Chinese Language)
- Edusave Scholarships
- EMB
- Edusave Good Progress
- Barre Award

**Communicates confidently,
Thinks creatively,
reflects thoughtfully**

Platforms to Celebrate our Girls' Growth



Recess Procedures





Day 1 (P1 only)

P1:

9:45am (1C, 1G, 1J, 1P)

10:45am (1F, 1H, 1L, 1T)

Day 2 onwards (All levels)

1 Level Per Recess

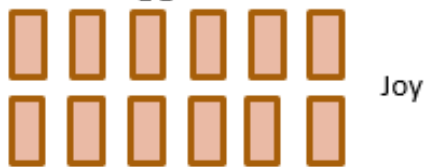
	Recess Time	Snack Time
P1	8.15am to 8.45am	Between 10.45am and 11.15am
P2	10.15am to 10.45am	Between 12.15pm and 12.45pm
P3	9.15am to 9.45am	Between 12.15pm and 12.45pm
P4	8.45am to 9.15am 11.15 am to 11.45nn (Fri only)	Between 11.45am and 12.15pm Between 8.45am and 9.15am (Fri only)
P5	10.45am to 11.15am	Between 8.45am and 9.15pm
P6	9.45am to 10.15am	Between 11.45am and 12.15pm

Recess Schedule





Ponggol Lower



Joy



Truth



Peace



*Love

3 pax per
table

Canteen Stalls

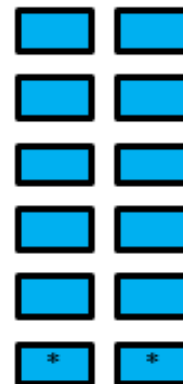
Hope



Grace



Faith



Charity



Recess Seating

CHIJ Our Lady of the Nativity





Dismissal Procedures Primary 1





Dates	Class	Mondays, Tuesdays, Thursdays & Fridays	Wednesdays
4 Jan to 7 Jan (Week 1)	1 Charity/1 Faith/ 1Grace/1 Hope	12.45 pm	12.45 pm
	1 Joy/1 Love/ 1 Peace/1 Truth	1.00 pm	1.00 pm
10 Jan to 28 Jan (Weeks 2 – 4)	1 Charity/1 Faith/ 1Grace/1 Hope	1.00 pm	12.50 pm
	1 Joy/1 Love/ 1 Peace/1 Truth	1.10 pm	1.00 pm
From 31 Jan onwards (Week 5)	All P1 Classes	1.15pm	1.00pm

Dismissal: These are the dismissal times until further notice





Dismissal

- Teachers will bring P1s to the various dismissal points – Bus (hall), SCC (hall), Side Gate 2.
- Girls waiting for older sisters will wait in ISH Ponggol Lower.
- **Caregivers:**
 - Please adhere to social distancing measures, refrain from inter-mingling and keep masks on at all times
 - Students will only be released to authorized adults, i.e. those with form.
 - Teachers will call parents if the authorized adult is more than 15 minutes late.
 - Caregivers will not be allowed to wait in school for child, e.g. older sister



CHIJ OLN - P1 Student Dismissal Pick up arrangement via Gate 2

For Tuesday 4 January – Friday 28 January only

Name of child: _____

Child's class: Pri 1 _____

Please tick (✓) accordingly:

- ☐ I will pick my child up at dismissal
- ☐ I authorise a caregiver to pick my child up at dismissal

• Name of caregiver: _____

• Relationship of caregiver to child: _____

Parent's signature

Date



- Teacher brings class down
- Security guard announces name of class
- Security guard indicates dismissal of class on the Dismissal Chart

Dismissal (Side Gate 2)

PRIMARY 1
Dismissal Chart

1 CHARITY	
1 FAITH	
1 GRACE	
1 HOPE	
1 JOY	
1 LOVE	
1 PEACE	
1 TRUTH	





- Gathering point (school buses): Hall where school staff & bus drivers are present.
- Students should be tagged according to the school bus number. Bus company has already issued it. Admin staff has ensured the tags are tied on to bags.
- Subject teachers will send pupils to the hall & direct them to the correct bus queue.
- Note: while P1 students are dismissed earlier than the other levels, they will wait for students from the other levels before the school buses leave the school premises from 1:30pm.

Dismissal Procedures: Bus matters





- Student Care Centre (COMMIT Learning Schoolhouse): Subject teachers will take students to the school hall to meet SCC staff.
- External Student Care Centres (ProTeach, Morning Star, Little Professor, PlayFACTO, Yucai)
 - Some Student Care Centres choose to pick the students from CHIJ OLN.
 - Subject teachers will bring these students to Ponggol Lower & hand them over to the Student Care Centre teachers.
 - These students will be seated in Ponggol Lower to wait for their transport to the Student Care Centre.

Dismissal Procedures: Student Care Centre(s)





Term 1: Networking meeting
(Friday 21 Jan, 4:30pm) via Zoom

Agenda

- Learning @ OLN
- Assessment
- General Information
 - Communication Channels
 - Class Matters

Other meetings will be scheduled
for later this year.

Should you have any other
questions at any point ...

- Form Teachers
- Subject Teachers
- Key Personnel
- School Leaders

Our email addresses can be found in
[https://chijourladyofthenativity.moe.edu.sg/
school-information/about-us/school-staff](https://chijourladyofthenativity.moe.edu.sg/school-information/about-us/school-staff)





Thank you &
we wish you
a wonderful day!

