



Welcome to CHIJ OLN!

PI Orientation
6th November 2024

CHIJ Our Lady of the Nativity
Simple in Virtue, Steadfast in Duty





Welcome address

Ms Christina Teo
Principal





We are a Govt-aided Catholic Girls' school

- **Govt-aided:** we adhere to MOE policies and requirements like all MOE schools but are run by the CHIJ Board
- **Catholic**
 - ...Prayer, Catholic programmes and activities
 - ...Value education: moral and life values.
 - ...See perspectives beyond that of the individual's.
 - ...Service to the community





We are a Catholic School


- The environment and our practices reflect our Catholic ethos.
- We share but not proselytise. Value of respect.
- Universal values.

Meaningful Monday

MEANINGFUL MONDAY

The Lord is my strength and my song; he has become my salvation.


Psalms 118:14



A verse taken from Sunday's readings

MEANINGFUL MONDAY

- No matter what we face in life, we have God on our side
- We turn to Him when we are in trouble
- God has saved us
- We thank God for His wonderful love



An explanation and interpretation of verse

THINK ABOUT...

Do you turn to God when you are faced with challenges or when you are feeling down?

In this week, let us offer up our worries to God and have faith in Him.



Reflection questions





Programmes for Catholics



<https://chijourladyofthenativity.moe.edu.sg/our-catholic-identity/catholic-education/the-environment>

[Our Founder – Father Barre](#)

[Mother Mathilde](#)

[School History](#)

[Catholic Education](#) ^

[The Environment](#)

[School-Wide](#)

[Programmes for All](#)

[Programmes for Catholics](#)

There are programmes designed specifically to help our Catholic students form their faith. Nevertheless, non-Catholics are welcomed to join in. Parents can inform their child's form teacher if they would like their child to do so.

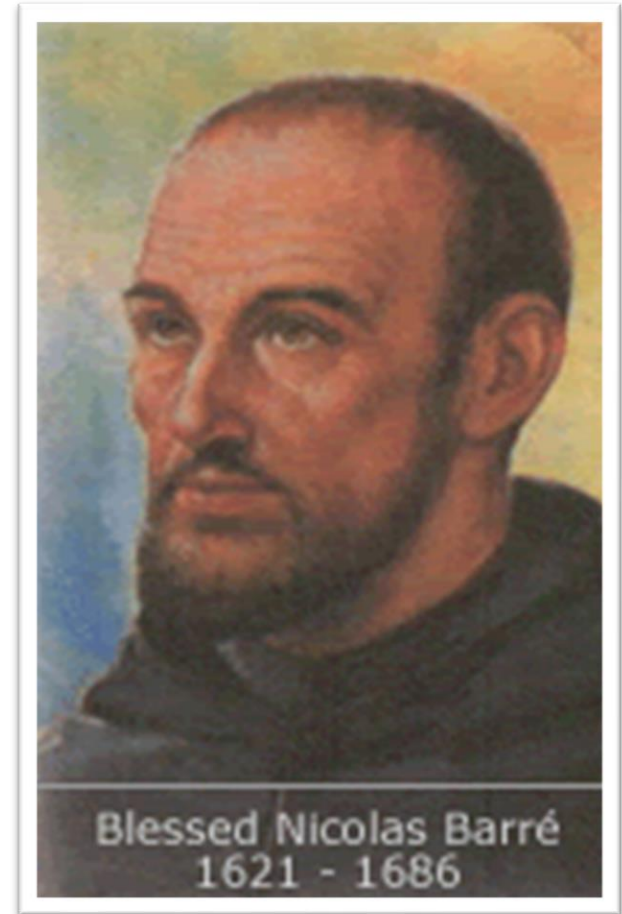
Our TLC Lessons (Together Learning about Christ)





We are an IJ school

- One of 11 CHIJ schools, affiliated to CHIJ St Joseph's Convent
- The mission of an Infant Jesus School is the creation of a Christ-centered school community where all work together for the promotion of truth, justice, freedom and love, with special reference to the needs of persons who are disadvantaged in any way.





We are an IJ school

Values:

Graciousness
Responsibility
Appreciation
Compassion
Integrity
Adaptability



Simple in virtue

Learning Dispositions:

- Collaborative
- Curious
- Reflective
- Resilient



Steadfast in duty



The IJ OLN Girl For Tomorrow ...



She lives out the IJ Mission and our GRACIA values as she:

1. Leads with initiative, serves with love
2. Communicates confidently
3. Thinks creatively, reflects thoughtfully
4. Remains steadfast in the face of challenges





Primary School Education

CHIJ Our Lady of the Nativity
Simple in Virtue, Steadfast in Duty





A Holistic Curriculum: the academics & more

Character focused

- Values-education lessons
- CCE & Social Studies lessons
- Values-in-action programmes
- Field Trips & activities
- Daily assembly e.g. pre-assembly talks

Physical Development

- PAL Programmes e.g. Outdoor Education, Sports & Games
- Physical Education programme
- Events e.g. P2 Games On!

Citizenship & Culture

- Commemorations e.g. International Friendship Day & National Day
- Mother Tongue Fortnight
- Celebrations e.g. Hari Raya Puasa & Deepavali



The Arts

- PAL Programme e.g. Music, Dance, Drama, Art
- Art Programme
- Music Programme (Music Comes Alive!)





Different Subjects at Lower Primary (P1 & 2)

- English Language
- Mathematics
- Mother Tongue (CL/ML/TL/ NTIL)
- Civics and Moral Education (CME)
- Social Studies
- Art
- Music
- Physical Education (PE)
- Programme for Active Learning (PAL) - Art / Music / Sports & Games / Drama / Outdoor Education
- Values Education (V-Ed)
- Form Teacher Guidance Period (FTGP)





Changes implemented since 2019

- No tests or exams for the Lower Primary classes
 - Observation by teachers
 - Daily work & reviews
 - No tests & no dates will be given to parents
- Use of qualitative descriptors to report student learning in all subjects
- Edusave Awards to focus on consistent demonstration of learning dispositions in school

What has not changed: Lower Primary years are vital for learning in the Middle & Upper Primary years

The Escape Room was designed as a revision activity on Numbers within 40.

ESCAPE ROOMS
Click on the rooms to enter the questions and unravel the clues. Once you have got the clue, enter them in the PASSWORD CONTROL ROOM and proceed to the next room.

ESCAPE ROOM 1 GET MY CLUE!
Add the number words in the appropriate box. (20) (30) (40) (10) (5) (25) (15) (35) (45) (55) (65) (75) (85) (95)

ESCAPE ROOM 5 GET MY CLUE!
Put the number words in the appropriate box. (20) (30) (40) (10) (5) (25) (15) (35) (45) (55) (65) (75) (85) (95)

PASSWORD CONTROL
Type in your CLUES here

ROOM 1: []
ROOM 2: []
ROOM 3: []
ROOM 4: []
ROOM 5: []
ROOM 6: []

Click on the KEY when you have entered ALL the clues.

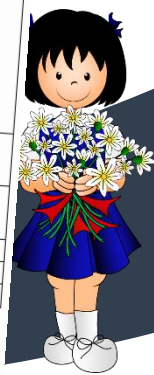
REPORT OF THE NATIVITY CREATIVE WRITING RUBRIC

Name: _____ ()

Class: Primary 2 C / F / G / H / J / L / P / T

Parent's Signature: _____

DESCRIPTORS		Beginning	Developing	Competent	Accomplished
CONTENT	Story has a clear beginning You have included : <input type="checkbox"/> time <input type="checkbox"/> place <input type="checkbox"/> characters				
	Story has a clear and detailed middle <input type="checkbox"/> character's actions <input type="checkbox"/> character's feelings <input type="checkbox"/> use of adjectives <input type="checkbox"/> use of adverbs <input type="checkbox"/> use of linking phrases (e.g. time linkers, conjunctions etc.)				
LANGUAGE	You have ended with a <input type="checkbox"/> feeling <input type="checkbox"/> lesson learnt				
	You have used the following correctly : <input type="checkbox"/> spelling <input type="checkbox"/> punctuation <input type="checkbox"/> tenses				
	<input type="checkbox"/> vocabulary				
Remarks:					





Being a CHIJ OLN girl

- Days of learning
 - Lessons filled with activities & reflection
 - Observation & reviews, & not tests
 - No birthday parties & goodie bags
 - Importance of regular attendance
- Making friends & managing friendships
- Growing to be more responsible
 - Rules & consequences, e.g. remembering things





Grow our girls to be young ladies

- Sending the right signal:
 - Having good routines
 - Coming late frequently/regularly
 - Missing school frequently/regularly. Going on holidays
 - Need for a good reason for absences, e.g. MCs.
- Minimising distractions
 - Phones and Smart watches to be switched off & kept in bag.
 - No toys
- Working together with the teacher:
 - Do submit documents on time
 - Pls respond to the teacher





Working together, Home & School

Better together!



Growing our girls to be the teenagers and women that God intended them to be!

- Seek to understand what we do and why we do it
- Your daughter is important so are the others: consideration for all and meeting multiple needs
- Model gracious behaviour





My Child is Primary 1 Ready!

Mdm Hanizah
Year Head (Lower Primary)





STARTING SCHOOL IN 2025

Primary 1





Transiting to Primary I

A smooth transition happens when your child:

- feels safe and comfortable in her new environment.
- is able to manage the daily challenges of school life.






Transiting to Primary I

- A New Experience!
- Adjust to a larger learning environment
- Interact with more peers and teachers
- Adapt to longer school hours
- Become more independent and responsible






Transiting to Primary I



GO.gov.sg

TIP 6




Time To Let Go!

Let your child discover how to make their own way to success.

Guidelines: They can learn through making mistakes and solving such their own problems. It can be scary, but there are lots of ways that they will learn from your child's own problems. It's okay to let them struggle and get up again - to help in the long run!

I Learn From My MISTAKES

Every child faces setbacks in school. Chat with them about mistakes - so they know how to learn from them and be resilient. Share your own experiences with failure, too!





GO.gov.sg

Supporting your child's transition through **Primary 1**

Build a caring home environment to nurture the social and emotional skills of your child using these S.A.F.E. tips.

SUPPORT

- Connect some time every weekend to play games and have fun together.
- Visit places or take part in events that both of you enjoy.
- Encourage your child to make new friends.
- Try out FTGP® Family Time activities.

AFFIRM

- Encourage your child when he makes observations. E.g. Say "That's interesting!" and ask why he/she said that.
- Recognise small successes. E.g. Say "You've made another new friend to class - well done!"

FAMILIARISE

- Find out what primary schools have in store for students these days.
- Do practical things to ease your child into new routines. E.g. Place order routine together, teach your child how to hold the penning teacher bag.

EMPATHISE

- Teach your child words that describe feelings.
- Acknowledge your child's emotions. E.g. "It's okay to feel nervous about starting school."
- Understand your child's needs. E.g. Start bedtime early. Children need a lot of sleep.

From Teacher Support Portal

Spend Time Chatting. Use T.A.D.

Talk

Talk about fond memories of your own school days. E.g. What you did in Primary One. Ask teachers and check observations you had.

Ask

Ask about his/her thoughts and feelings about the school. E.g. FTGP activities, where he/she felt happy.

Discuss

Discuss together what can be done if he/she has worries at school. E.g. Explore how people deal with worries.

QUICK TIPS

- Listen without interrupting.
- Hold your hand and ask questions to show interest and affirmation.

These tips may be used with children of other ages too. Tailored to each child's needs, being there for all your child's needs. Please do not hesitate to reach out for support and advice, and call us for any other enquiries. © 2020 Ministry of Education


SCHOOLBAG
THE EDUCATION NEWS SITE

HOME EDUCATION FEATURES TEACHERS' DIGEST MULTIMEDIA FAQ


Home > Put the books down! 6 skills your child really needs for P1

Put the books down! 6 skills your child really needs for P1

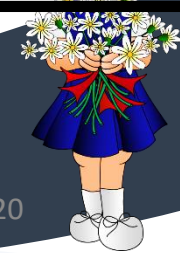
14 JUN 2021



MOE Stock Image (Photo taken before COVID-19)



GO.gov.sg





Transiting to Primary 1

Welcome to the CHIJ OLN family!

STARTING SCHOOL IN 2025
Primary 1



CHIJ Our Lady of the Nativity
Simple in Virtue, Steadfast in Duty

OFFICIAL (CLOSED) \ NON-SENSITIVE

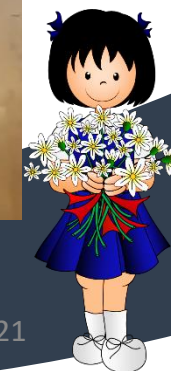


These include the storytelling sessions and thematic activities for the students.



<https://www.chijourladyofthenativity.moe.edu.sg/information-for-parents/pl-matters/>

CHIJ Our Lady of the Nativity
Simple in Virtue, Steadfast in Duty





School Rules: Punctuality



philipmatn.com

- Be punctual. Students must be seated in the school hall/classroom by 7.30 a.m. (Monday - Friday).
- Parents/Guardians must sign the “Permission to Leave School” form in the General Office to take their child/ward home before the official dismissal time.





School Rules: Attendance

- Attendance is compulsory for all school days, events and activities.
- Parents must inform the school (via Form teacher) if their daughter is absent. Please ensure that a medical certificate or letter of excuse is presented.
- The school will accept a maximum of 3 letters each term for child's absence. A medical certificate should be given otherwise.





Snack Time in Class

- 10-minute snack break in class between **8.30 am and 9.00am**
- Students are not to share snacks with their friends for reasons of personal hygiene and food allergies.
- Students will not be allowed to buy snacks from the canteen during lessons.



CHIJ Our Lady of the Nativity
Simple in Virtue, Steadfast in Duty





Snack Time in Class

- What to pack:
 - Nutritious dried food items e.g. cereal, bread, biscuits, buns, muesli bars, fruits, dried fruits, nuts and raisins.
 - No cooked food and/or food items that need to be chilled (e.g. sushi).
 - No unhealthy snacks e.g. chips and sweetened drinks.
 - Look for the Healthier Choice Symbol (HCS) to guide purchases



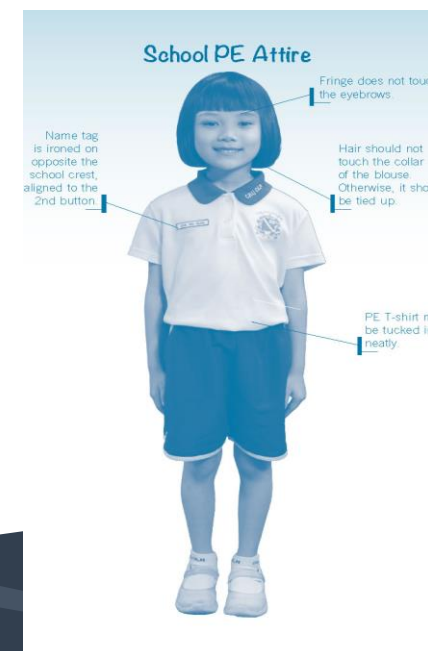
CHIJ Our Lady of the Nativity
Simple in Virtue, Steadfast in Duty





School Rules: Attire

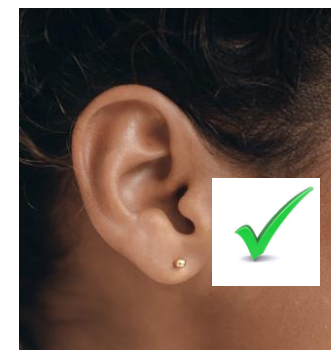
- Wear only white school socks and shoes.
- Name tags ironed onto pinafore and school PE T-shirt
- Be neat and properly attired in school uniform at all times, **inside and outside school.**
- Students to wear the pinafore over PE T-shirt on days when they have PE or PAL lessons.
- Pls note that girls are to wear the pinafore on all days to school.





School Rules: Appearance & Accessories

- Hair touches the collar must be tied up.
- Only plain black hair accessories are allowed
- Only small and simple ear studs are allowed
(no hoops earrings)
- No smart watches, jewellery or accessories.
- **No display of religious accessories.**
- Students are not allowed to colour their hair.



Small & simple ear stud



hoop earrings





First Day of School - 2 January 2025 (Thursday)

- Only 2 accompanying adults per child are allowed to come into the school
- Entry point from **Side Gate 2** (gate will be opened at 7.00am)
& **Side Gate 1 (wet weather only)**
- Registration at the Indoor Sports Hall (Lower Ponggol), Level 2
- Students and parents will proceed to the school hall on Level 3
- Students will have their attendance taken by the teachers at the hall
- Students arriving by school bus will be escorted to the hall by teachers on duty. Parents should proceed to the registration area and then to the hall.





PI Day I Programme

Time	Programme (Students) P1 classrooms	Programme (Parents) Hall
0715 - 0730 0730 - 0740 0740 - 0745	<ul style="list-style-type: none"> Registration Assembly at the hall Proceed to classroom 	<ul style="list-style-type: none"> Registration To proceed to the hall
0745 - 0945	<ul style="list-style-type: none"> Class Time with Form teachers (FT) 	<ul style="list-style-type: none"> Parent Engagement session
0945 - 1030	<u>Recess (Canteen)</u>	<u>Child's Recess (Canteen)</u>
1030 - 1230	<ul style="list-style-type: none"> Class Time with FT 	<ul style="list-style-type: none"> ICT Hands on session P1 Parent-Teacher Networking session (P1 Classroom) <p>*1200 :</p> <ul style="list-style-type: none"> End of Parents' Programme. (Parents to leave the school premise)
1230 - 1315	<ul style="list-style-type: none"> FT time + Snack time Pupils are to bring along their own healthy snacks.	
1320	Dismissal @ Lower Ponggol	Dismissal <ul style="list-style-type: none"> Those being picked up by parent / caregiver: ISH Lower Ponggol (2 - 17 January): Please show ID/ email from the school for identification. School Bus/ SCC: Hall





PI Back-to-School Programme (BTSP 2025)

Day 2 (Fri)

- Class Bonding activity-Play@OLN
- Setting Class Routines
- Meeting my P4 Buddy Sister
- Recess with my Buddy Sister
- Class Time
- Admin Matters (collection of books & files)

Day 3 (Mon)

- V-Ed Activity: Making New Friends
- Class Time
- Recess with my Buddy Sister
- Setting Class Rules & Expectations
- Library Programme
- Admin Matters (collection of books & files)

Day 4 (Tues)

- Class Time
- Art & Music Activity
- Recess with my Buddy Sister
- Mother Tongue Activity
- Admin Matters (collection of books & files)
- Sisterly Love Activity



Safety during Arrival and Dismissal

Mrs Catherine Michelle Beins
Vice-Principal





School Daily Routine

Activity	Time
Reporting Time	Before 7.30 a.m. (GLOW morning activities starts at 7.20 a.m.)
Flag Raising Ceremony	7.30 a.m.
Recess	10.30 a.m. - 11.00 a.m.
Snack Break	10 mins (between 8.30 a.m. and 9.00 a.m.)
Dismissal Time	1.20 p.m (2 Jan - 17 Jan -Lower Ponggol) 1.30 p.m. (20 Jan onwards -Side Gate 2)





Safe Routes for Different Modes of Arrival

School Bus: Students alight at Bus Bay within School Carpark Area

Public Bus/Walk/Cycle: Students use Gate 2 to enter the school

Private Vehicles/Taxi

- Drop off points within the school (**speed limit @ 15km/h**)
- Drop off points at HDB carpark near Gate 2
- Park at designated lots within Multi-Storey carpark or open carpark before walking child to Gate 2.

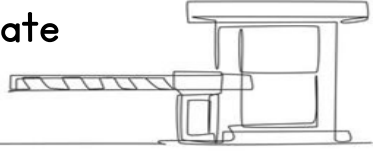




Traffic flow for morning drop-off

(Blk 355/356)
Open carpark

Main gate



Overhead bridge

Bus stop

Side Gate 1

MSCP
(Blk 465A)

Open carpark

Side Gate 2

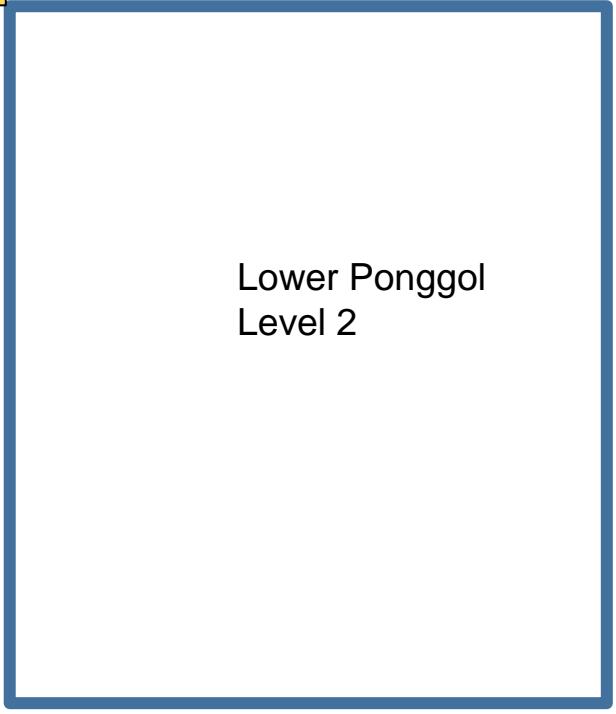
Nativity Church

Drive safely. **Do not overtake** the car in front, unless instructed by security officers / traffic marshals

School Buses drop off before 7am

Drop off 5

Drop off 4



Lower Ponggol Level 2



Drop off 1

Drop off 2

Drop off 3



Car Porch

Drive safely. Do not overtake the car in front.





Arrangements: Going Home

- You will receive a PG letter on **15 Dec 2024**. Please confirm your child's pick-up arrangements at dismissal.

A response by **20 December 2024** is much appreciated.

- School bus (bus number)
 - Side Gate 2 (adult/s fetching students)
 - Student Care Centre (IJOLN Student Care/other Student Care)
 - Wait for older sister(s) at Lower Ponggol
- For the safety of your child, please inform her to wait inside the school, near either Side Gate 1 or Side Gate 2.





Picking Your Child Up From School (Gate 2)

2 January - 17 January ONLY

- Dismissal Time : 1.20 p.m.
- Pick-up Point : Lower Ponggol

From 20 January onwards:

Mon-Fri	1.30 p.m.
Pick- up Point	Side Gate 2

- Parents are not allowed to drive into the school at dismissal for safety reasons.
- Parents will be informed of any change in timing through PG, e.g. earlier dismissal on half-days.

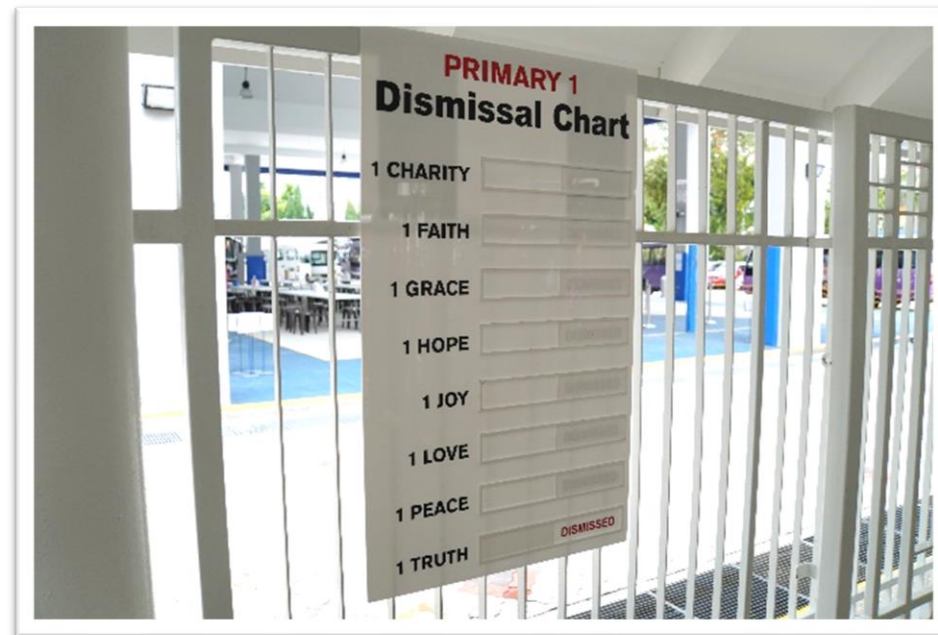




Pick-up Arrangements

Do note that from Monday 20 January

- PI parents and caregivers will no longer be allowed to come into school to pick up their child.
- The teachers will walk the students to Side Gate 2 to meet parents and caregivers.
- For her safety, your child must wait for you inside the school.





Going Home on the School Bus

- The bus vendor will provide coloured tags to be fastened on students' bags for easy identification.
- Form Teachers will bring the students to the bus waiting area (school hall) at dismissal.
- Bus drivers will account for students registered with them before leaving the school. Please inform the bus company and your child's teacher in advance if your child is not taking the school bus for the day.

This is to avoid miscommunication or confusion.

- Buses will wait for students from other levels (P2 to P6) before moving off.
- For safety reasons, students **must remain seated** and **belted up at all times** when the bus is moving. Please help us reinforce this safety message.
- To contact the bus vendor, please call KW Bus Pte Ltd (8498 4950)





Changes in dismissal arrangement

- Please call the General Office or text the Form Teacher if you intend to make any changes in the dismissal arrangements.
- Please inform the Form Teachers if there is a change of adult/caregiver whom you have assigned to pick up your child.
- The Form Teacher may not always be the one dismissing your child at Side Gate 2. As such, we would appreciate that you inform the school early of changes and that you do not make frequent changes.





Communication with Parents

CHIJ Our Lady of the Nativity
Simple in Virtue, Steadfast in Duty





Communicating with your child's teacher

- Have regular conversations with teachers in both the academic and non-academic areas. This will help you better guide your child's development.
- Teachers will respond to work-related messages only during school hours, except for emergencies.
- Please note that the teachers may not be able to respond to your messages when they are having lessons or meetings.





Communications

- School web page www.chijourladyofthenativity.moe.edu.sg
- School Organiser
- OLN Connect (monthly newsletter)
- Email Form Teacher (refer to school website for email address)
- Call General Office (Tel : 6385 2455)
- Parents Gateway (MOE mobile app for official communications, consent forms, travel declaration etc.)





Overview of Mobile Apps



Parents Gateway

Parents receive **announcements, letters, consent forms, make travel declaration** etc.

Hardcopies will not be disseminated to parents.

Parents give consent for participation in class/school activities.

Only **parents and authorised caregivers or legal guardians with Singpass** can access this.

Developed by the Ministry of Education (MOE) and used by all MOE schools since 2019.



WhatsApp Business text messages

Allows for 2 way-communication between teachers and parents. Please note that teachers will respond to work-related messages only during school hours (between 7am and 6pm), except for emergencies.

Teachers will share with parents their WhatsApp Business numbers for parents to join the groups they have created when term starts in January 2025.

WhatsApp may be downloaded from Google Play Store or iTunes.
Parents do not need to download WhatsApp Business.





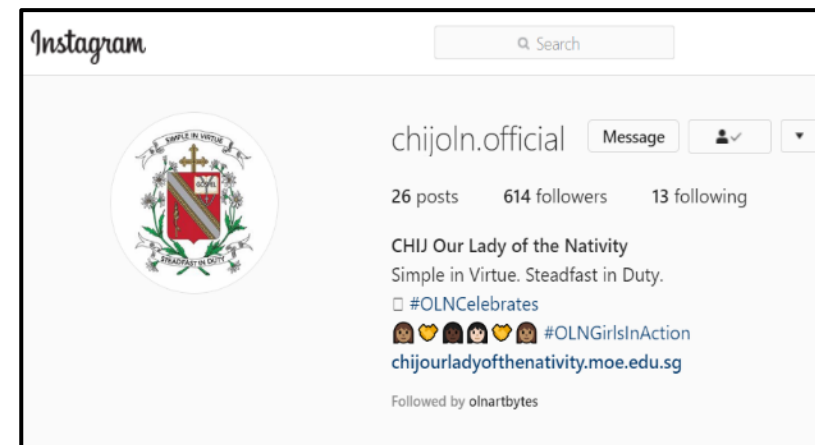
IJ OLN SOCIAL MEDIA PLATFORMS



facebook.com/chijoln.official



@chijoln.official





WE ARE HERE TO SUPPORT YOU!



Parent Kit

www.moe.gov.sg/parentkit

Each Parent Kit issue contains bite-sized actionable tips with supporting resources for parents to help them support their child in their education journey.

Parent Kit



SCHOOLBAG

THE EDUCATION NEWS SITE

Schoolbag.edu.sg

www.schoolbag.edu.sg

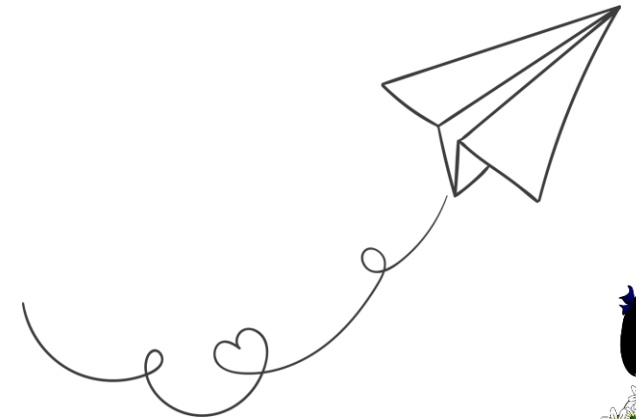
Through articles and multimedia content, Schoolbag provide parents and general public with information and insights related to education, tips for parent involvement and features on programmes.





Year-end Travel Declaration

- To ensure our school continues to be a healthy and safe environment for all, parents/guardians are required to make a travel declaration via Parents Gateway (PG). This is only applicable if your child/ward intends to travel for the year-end holidays.
- A nil return is appreciated.
- Please submit your child's travel declaration from **16 December 2024** onwards.





Parents Support Group

Mrs Angela Yang

Chairperson





What I learn....

1. Self-Care
2. Support girls to be independent and accountable
 - i. Check school timetable
 - ii. Check diary if there's homework
 - iii. Make sure pack allowance
 - iv. Pack snack
 - v. Get ready school uniform/socks/shoes
3. Partnership with the school
4. Be mindful of devices
5. Be joyful, be present and be part of a community





CHIJ OUR LADY OF THE NATIVITY PARENT SUPPORT GROUP (PSG)



CHIJ Our Lady of the Nativity
Simple in Virtue, Steadfast in Duty





PSG Objectives @ OLN

Supportive Partner in Education

Bridge Between Parents and School

Magnet to Attract Other Parents





IJ OLN PSG... We want to...

Continue the spirit of the founding father(Nicholas Barre)

Revive the Kampung Spirit. The community of respect and kindness for one another.





SCHOOL EVENTS

- Teachers' Day
- Children's Day
- Language Comes Alive
- Healthy Plate challenge
- And many more....





PASTORAL ACTIVITIES



CHIJ Our Lady of the Nativity
Simple in Virtue, Steadfast in Duty





SOCIAL EVENTS

Bonding activities and life skills workshops etc.



GLOW & GROW WITH YOUR CHILD

PARENTING TALK @ CHIJ OLN

FRIDAY
23 AUGUST 2024
4:30PM - 5:30PM

Come listen to our two engaging speakers and learn strategies on how to guide your children to use technology responsibly so that they stay safe and healthy in the digital world.

ZOOM DETAILS TO BE PROVIDED TO REGISTRANTS

RAISING SCREENWISE KIDS (P1 - P3)

Understand the impact of various forms of media and how it affects your child's perceptions, attitudes and behaviour. Learn how to make rules without making enemies, and use practical skills to engage with your child and leverage on media and technology.



JOSHUA LIONG

NAVIGATING YOUR TEEN'S DIGITAL INFLUENCE (P4 - P6)

Understand the impact of social media influencers on young minds and learn how to navigate the positive and negative effects.



KAREN TONG



CHIJ Our Lady of the Nativity
Simple in Virtue, Steadfast in Duty



ADHOC ACTIVITIES

- Chinese New Year decoration
- Banner design for Teacher's Day, Children's Day, etc.
- Make-up / costume preparation for school plays, NAPFA testing, Brownies Cookies Sale etc.





Who Should Join?

Parents

who wish to know what is happening in and around school, and who wish to be part of these happenings

who feel the importance of journeying with their daughters

who wants to build rapport with other parents and share parenting tips





How Can I Help?

Pastoral

(to nurture and nourish Christian ethos and spirituality of our girls)

Recess Activities according to the Liturgical Calendar

Family activities

Quiet Time in the Prayer Room

Praying Parents Group

Ongoing

Arrival safety: Traffic / Gate
Time : 650 am - 7.30am

Recess Champions

Green Champions

Admin Support

Fun & Languages
7.00am - 7.30am

Events

Commemorative Days

PI Orientation Booth

Social Events : Parents
Play on

Parent Child Bonding: Mid Autumn
festival (to be confirmed)

E-Open house

Life Skills sharing session
(hope to start)





How much of your time is needed?

- On going programs - daily, weekly, monthly (30 min hr/session)
- Ad-hoc or project basis
eg. banner design for school events, school fund raising carnival, dance performance, etc. (1-2 hrs / session)





In progress: Fun & Languages (to be confirmed)

PI & P2 students

T2 2024:

Tuesdays & Thursday,
from 7.00 - 7.30 a.m

The PSG members read interesting/fun story books. Play some games/handicraft to encourage the use of good language





Any questions?

1. What if my commitment level changes?
 - i. We can work with you to accommodate the changes in your schedule.
2. Can grandparents or helpers also volunteer?
 - i. Yes, grandparents are welcome, do sign them up using the PSG form via the QR code.
 - ii. Helpers; refer to MOM guidelines.
3. Will my child get more advantage(s) and more benefit(s) than those children whose parents did not join PSG?
 - i. No. All children are equal in school. Objective of PSG is to work with the school as a team and to support the school in their programs to enrich our girls learning experience.





Join Our Parent Support Group

Scan to fill up registration form



CHIJOLNPSG@GMAIL.com

CHIJ Our Lady of the Nativity
Simple in Virtue, Steadfast in Duty



Scan to join the P1 Parents Community!



2025 CHIJ OLN P1 Chat Space
WhatsApp group



You can find the class group chat link
in the description.





THANK YOU!

Whatever your task, work heartily, as serving the Lord and not men. Colossians 3:23

