

PSLE RESULTS PRESENTATION

25 NOVEMBER 2025





Heavenly Father, we thank you for all your blessings.
We ask you, this morning, that you be with our girls who will
be getting their PSLE results.

Calm their nerves and anxiety.

Fill them with a spirit of faith and hope.

Grant them grace and strength.

Bless their parents too who are just as anxious.

Give them the grace and wisdom in helping their children
deal with their expectations.

For all these, we ask in the precious name of Jesus.

Amen.



To our IJ OLN girls:

Congratulations!

**We are proud of your journey,
continue to shine and keep
believing in yourselves!**





To our supportive Parents:

Thank you!

**Thank you for walking alongside
your daughter with patience,
love and encouragement.
Your support has made her
journey possible & meaningful!**



How you can support your child today


Ministry of Education
Singapore

PARENT KIT

Celebrating Your Child's Effort, Guiding Them Forward



Your words and actions make a big difference to how your child feels.

Here are some suggestions to make your child feel appreciated for their effort in the PSLE, as well as tips for choosing suitable secondary schools with them.

#1 Be present

Even if you cannot physically be with your child in school on the day itself, a short phone call before and after the results' release on how they are feeling will show that you are there for them.



#2 Celebrate effort, not results

Celebrate your child's hard work and effort, regardless of the results.

What matters is that they have given their best.

#3 Don't compare!

Don't compare your child's results with others.

Regardless of the outcome, it is important for your child to know you love them, and that their grades don't define them.





PSLE 2025: MAKING INFORMED SCHOOL CHOICES

Slides will be put up on the CHIJ OLN website by 5pm today.





1 CONSIDERATIONS





CONSIDERATIONS

Parents may use this guide to start thinking about factors to consider as you shortlist secondary schools with your child. You can visit the PSLE-FSBB Microsite to get a copy of this guide and other resources.

A SECONDARY SCHOOL THAT'S SUITABLE FOR YOUR CHILD

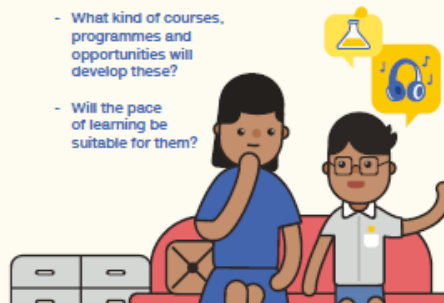
Help them match to their strengths and interests.



ASK:

What are their strengths, interests, and abilities?

- What kind of courses, programmes and opportunities will develop these?
- Will the pace of learning be suitable for them?



CONSIDER:

- o School Culture
- o Courses
- o Programmes, Subjects and CCAs Offered
- o Location and Transport
- o If your child has Special Educational Needs
Select schools with specialised facilities or resources.



SUBMIT:

- o 6 School Options
So that your child is more likely to get into a school of choice.
- o Schools with Different Cut-Off Points
Consider at least 2-3 schools where your child's PSLE Score is better than the school's Cut-Off Point.

REFER TO:



MOE's SchoolFinder

Check out schools based on subjects offered, co-curricular activities, location and contact information.

YOUR RANKING OF SCHOOL CHOICES MATTERS.

The higher you rank your preferred school in your choice order, the better your child's chance of being posted there if there is a tie-breaker.

Do note that schools' PSLE Score ranges can vary from year to year, since they depend on each cohort's performance and choice patterns.





2

APPLYING FOR CHIJ SJC, USING THE AFFILIATION PRIORITY





ELIGIBILITY FOR AFFILIATION PRIORITY IF:

- Meet the affiliate minimum requirement (AMR) set by CHIJ St Joseph's Convent; and
- Indicate **CHIJ St Joseph's Convent** as her first choice at Secondary 1 Posting

Course	2024 PSLE Score Range (Affiliate)	2024 PSLE Score Range (Non-affiliate)
Group 3	9 – 20	10 – 13
Group 2	21 – 25	21 – 23
Group 1	25 - 29	25 - 26





PLEASE NOTE:

- If your child's/ward's PSLE score meets CHIJ St Joseph Convent's AMR and she wants to be considered for affiliation priority, she **must indicate the affiliated secondary school as first choice**.
- If your child/ward prefers other non-affiliated schools instead, she should rank them ahead of CHIJ St Joseph Convent.
- If CHIJ St Joseph Convent is her 2nd – 6th choice, your child/ward will **not** be considered for affiliation priority. She will be considered for admission together with non-affiliated applicants since the affiliated secondary school is not her first choice.
- Applications to an affiliated school **does not guarantee a place**.
- No change to affiliation policy in the new PSLE Scoring and S1 Posting systems.





THERE IS NO CHANGE TO AFFILIATION POLICY IN THE NEW PSLE SCORING AND S1 POSTING SYSTEMS

- **Affiliation priority and meeting the AMRs do not guarantee admission into the affiliated secondary school:**
 - Subject to child indicating affiliate school as **first choice** at S1 Posting and the **availability** of vacancies in the school
 - If the demand from affiliates exceeds the available vacancies for affiliates, they will be posted by merit based on their PSLE scores. No change from previous years.
- **Sec schools reserve 20% of the places in each course (Groups 1 / 2 / 3) for students who do not benefit from affiliation priority**





3 ADMINISTRATIVE MATTERS





ADMIN DETAILS TO KEEP IN MIND

- The 2025 PSLE Certificates will be issued to students today i.e. **Tuesday 25 November 2025.**
- The PSLE result slips and certificates will be printed with the same personal particulars maintained in iEXAMS2 as of **31 October 2025.**
 - There is an administrative fee for the amendment of each PSLE certificate.
 - The amended PSLE certificate will be issued to the school in January the following year.
- There will be no reprinting or replacement of lost or damaged certificates.





ADMIN DETAILS TO KEEP IN MIND

- Appeal of a review of results: Applications must be submitted to SEAB via CHIJ OLN **by Monday, 1 December 2025**. There is an appeal fee of S\$60 per subject (inclusive of GST).
- Outcome of the appeal is expected to be released to School Leaders: **Wednesday, 17 December 2025**.
- Submission of school choices: **25 November 2025, 11.30am – 1 December 4.30pm** through MOE's S1 Posting website at www.moe.gov.sg/s1-posting.
- Release of S1 Posting Results: between **18 or 19 December** through these channels:
 - S1 Portal (www.moe.gov.sg/s1-posting) using parents' Singpass;
 - Short Message Service (SMS) via a local mobile number (if provided by the applicant during the application process);
 - At students' primary school.





4 REPORTING TO SECONDARY SCHOOL





REPORTING TO SECONDARY SCHOOLS

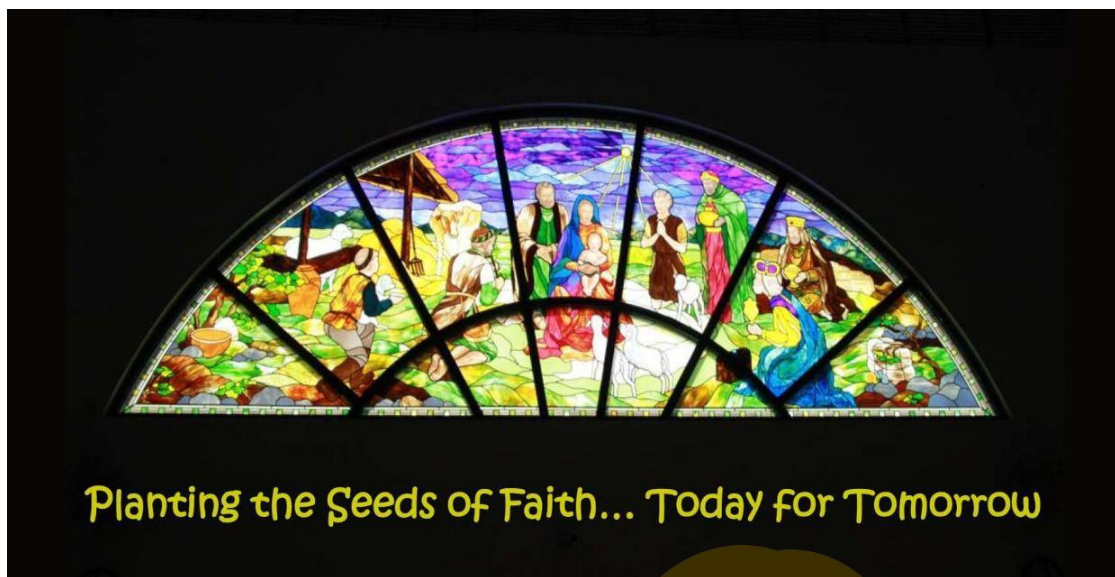
- All posted PSLE students (including those who are admitted via DSA-Sec) will report to the posted secondary schools **when schools re-open on 2 January**. Please visit the posted secondary school's website to find out:
 - Reporting arrangements (when school reopens in January)
 - Student and parent familiarisation activities
 - Online purchase of new uniforms and textbooks
- Students who are unable to report to the posted secondary school on the first day of school due to valid reasons, should contact the posted secondary school for assistance.
- Parents will receive instructions from posted secondary school via PG after the posting results have been released.





A Gift of Gratitude

© CHIJ OLN



Scan the QR code below using your mobile banking app:



CHIJ Our Lady of the Nativity
1257 Upper Serangoon Road Singapore 534793

Dear Friends,

CHIJ Our Lady of the Nativity (CHIJ OLN) has plans to enhance its faith environment for students, staff, parents and visitors. We will be renovating our Prayer Room, creating a space for Our Lady at the school lobby and relocating Our Lady's statue in the school garden. Through this, we hope to provide sacred spaces for quiet time, prayer and reflection - spaces where we can silence our hearts and minds amidst the busyness of each day.

We appeal to your generous support in our fundraising efforts to enhance our faith environment and to deepen the experience of all who come into CHIJ OLN.

We seek your continuous prayers for CHIJ OLN. May God bless you abundantly as we walk together in this journey of faith and love.

Yours faithfully,

The CHIJ OLN Family

Donations can be sent via PayNow to our UEN: **T07GS5007F (CHIJ Our Lady of the Nativity).**

Please indicate "Sacred Spaces" followed by your child's/ward's name and class in your reference number. If you do not have a child/ward in the school, please indicate "Sacred Spaces".

Alternatively, you can scan the QR code below using your mobile banking app. We regret to inform you that the donations are not eligible for tax deduction.

The donations raised will be for this School Upgrading Project (Sacred Spaces) and/or any other educational purpose(s) approved by MOE. Should there be any excess fund, it will be allocated to other MOE-approved educational purposes within CHIJ OLN.





HE MAKES
everything
BEAUTIFUL
IN HIS TIME
ECCLESIASTES
3:11

