



School Mission

A CHIJ School is a Christ-centered school community where all work together for the promotion of truth, justice, freedom and love, with special reference to the needs of students who are disadvantaged in any way.

School Vision

Girls of Today for Tomorrow

I Want To Be Like You

Thank you, teacher,
for being my life's role model.

When I consider all
you've taught me
and reflect on the kind of person
you are,
I want to be like you—
smart, interesting and engaging,
positive, confident, yet
unpretentious.

I want to be like you—
well-informed and easy to
understand,
thinking with your heart as well
as your head,
gently nudging us to do our best,
with sensitivity and insight.

I want to be like you—
giving your time,
energy and talent
to ensure the brightest possible
future for each of us.

Thank you, teacher
For giving me a goal to shoot for:
I want to be like you!

By Joanna Fuchs

<https://www.poemsource.com/teacher-poems.html>

Term 3 School Holidays (3 - 11 September 2022)

If your child is travelling during the school holidays, please submit her travel declaration via Parents Gateway (Service -> Declare Travels) if you have not already done so. If there is any amendment or cancellation to the travel plan, you can do so via Parents Gateway.

Do refer to [ICA website](#) for more information and updates on travel as well as abide by MOH's travel advisory. A nil submission is NOT required.

We have reminded our students of the following:

- Students should follow the prevailing Safe Management Measure guidelines.
- Students should wear a mask when required to do so e.g. on public transport.
- Students should continue to observe good personal hygiene measures at all times.

Please talk to your daughter about these measures and encourage her to continue to put them in practice.

General Information

Mask Wearing in CHIJ OLN

With effect from Monday 29 August 2022, mask-wearing has been made optional except on public transport and in health care facilities e.g. clinics and hospitals.

Mask-wearing will be optional in the school premises such as hall, canteen, classrooms, special rooms, library, lobby and during PE lessons. However, should your daughter go to the Dental Clinic, she will be required to wear a mask.

Please continue to remind your child to pack a mask in her schoolbag.

Revised Bus Fares in 2023 and Enhanced Financial Support Amidst Rising Cost Pressures

As announced by MOE via Parents Gateway on 24 August 2022, the price cap for school bus fares under the existing school bus contracts will be lifted and school bus vendors can increase fares by up to 7% from 1 January 2023. This revision is a one-time increase due to the rise in fuel and manpower costs over the recent months.

Our school bus operator, KW Bus Pte Ltd, will reach out to affected parents in September to inform them of revision in bus fares for 2023, if any. Parents can then take this into consideration when devising transport plans for 2023.

Students on MOE FAS will also receive more support through enhancements given by MOE. For more information, you can refer to the link [here](#).



Inculcating a Sense of Responsibility Reminder

We would like to remind parents not to bring books, bags, money etc., at the request of your child. Should your child forget to bring the items for that day, all she needs to do is to highlight the fact to her teachers. The teachers will do the necessary e.g. to ensure that she is able to participate in the lessons. We seek your cooperation to inculcate in our students the need to be responsible and take ownership of their learning in school.

Teachers' Day Celebration Reminder

We will be celebrating Teachers' Day on Thursday, 1 September 2022. All students are to report to school by 7.25am, and will be dismissed at 10.30am. To minimise overcrowding, we will implement staggered dismissal:

P1: 10.00am	P3/P4: 10.20am
P2: 10.10am	P5/P6: 10.30am

As the canteen will be closed, we will implement snack time for all levels instead. Please remind your child to bring along some healthy dry snacks. There will be no afternoon activities (i.e. support lessons, P6 supplementary lessons and CCA) that day. The bookshop will also be closed that day. Please make the necessary transport arrangements for your child to return home if she is not taking the school bus.

While we are encouraged by the appreciation shown by pupils and parents for our teachers, we would like to ask that you refrain from buying expensive gifts. Instead, your child could present teachers with simple gifts like a hand-made card with well wishes, which would be much appreciated by our teachers. You and your child can also show your appreciation via the MOE's 'compliments section' at [this link](#) .

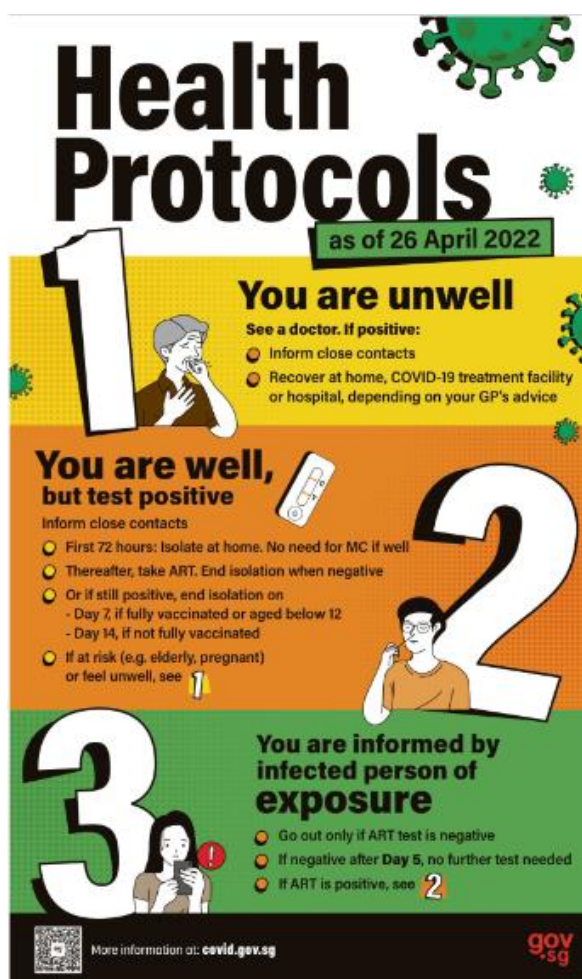


Fee Arrears

Parents with outstanding school fees / miscellaneous fees would have received notification letters from MOE to make payment. Please approach Mdm Maliga from the General Office, if you have any concerns. For Primary 6 pupils, any outstanding fees should be paid before the release of the PSLE results, i.e. around mid-Nov 2022.

Management of Students whose Household Members have tested ART AG+

We would like to share again an infographic that you can refer to if your child or any family member tests ART AG+:



In particular, please note that if any of your household members test positive via ART or PCR:

- Please do keep your child's Form Teacher updated of situation.
- Please let the Form Teacher know of your child's negative ART result each day for the first 5 days, before sending her to school.

Please be assured that CHIJ OLN will constantly review our measures to ensure that all students and staff are safe.



Home News

We would like to congratulate the following staff who have received the National Day Award:

Commendation Medal

Mrs Josephine Raj

Long Service Medal

Ms Angela Wan

Achievement

Our congratulations to these students who have done well in the following competitions:

Competition	Name	Class	Award
Singapore Mathematical Olympiad for Primary Schools	Vishruthi Neelakantam Venkatarayalu	6 Joy	Silver
	Astha Rai	6 Faith	Bronze
National Mathematical Olympiad of Singapore	Beatrix Ang Kun Ya	5 Grace	Silver
	Fion Kristiani Liew	5 Peace	Bronze
	Rochelle Yiying Tanujoyo	5 Truth	Bronze
	Samantha Wu Zhiyan	5 Grace	Bronze
Raffles Institution Primary Mathematics World Contest (Junior Category 2022)	Samantha Wu Zhiyan	5 Grace	Distinction
	Gwyn Lee Sing Teng	5 Faith	Distinction
	Sophie Lum Jia En	5 Truth	Distinction
	Ang Yu Yan Alexis	5 Faith	Distinction
	Masumi Peh	5 Hope	Distinction
	Goh Zi Xuan, Amelia	5 Peace	Distinction
	Zhu Yining	5 Joy	Distinction
	Rochelle Yiting Tanujoyo	5 Truth	Merit
	Goh Jia En, Nellie	5 Faith	Merit



Competition	Name	Class	Award
	Shannen Yip Shin Young	5 Truth	Merit
	Nikita Buttar d/o Delvinder Singh	5 Love	Merit
	Chew Han Rui, Sherlyn	5 Hope	Merit
	Chia Hui Qing Zoey	5 Joy	Merit
	Lim Rui Xian, Emma	5 Hope	Merit
	Fion Kristiani Liew	5 Peace	Merit
Raffles Institution Primary Mathematics World Contest (Open Category 2022)	Vishruthi Neelakantam Venkatarayalu	6 Joy	Distinction
	Chee Ying Na Javelcia	6 Faith	Distinction
	Tan Xuan Hui, Charlotte	6 Joy	Distinction
	Natalie Claire Del Rosario Lim	6 Grace	Merit
	Siak Yu Qin	6 Hope	Merit
	Astha Rai	6 Faith	Merit
	Leong Cheranne	6 Hope	Merit
	Alethea Leong Qi Wen	6 Joy	Merit
	Janani Kumaresan	6 Love	Merit
Singapore Primary Science Olympiad	Ankita Buttar d/o Delvinder Singh	5 Hope	Bronze
	Kaelyn Loh	5 Hope	Bronze
	Rochelle Yiying Tanujoyo	5 Truth	Bronze
	Ang Yu Yan Alexis	5 Faith	Merit
	Sarah Soh Xi En	5 Joy	Merit
	Sophie Chew Yi Xuan	5 Peace	Merit
	Tang Kaixin Evette	5 Love	Merit

Our congratulations to the following CCA groups:



Bowling:

Name	Class	Award
Gewyn Lee Sing Teng	5 Faith	The team came in 4 th and received a bronze medal in the Quartets event for the National School Games Bowling Championship (Junior division)
Goh Si Man Eva	5 Faith	
Shumaila	5 Hope	
Goh Liwen Yuki	5 Truth	
Desiree Chan	4 Truth	3 rd position in the Overall school ranks
Gewyn Lee Sing Teng	5 Faith	
Goh Si Man Eva	5 Faith	
Goh Liwen Yuki	5 Truth	

Floorball:

Our P5 players came in 2nd in the National School Games Competition (Tier 1).

Netball:

Our P5 players came in 2nd in the National School Games South Zone Netball Championships. We would like to thank the supporters and parents who came over to Our Tampines Hub to show their support.

Table Tennis:

Name	Class	Award
Cayla Tan Le Yu	4 Faith	2 nd place in Singles Tier 4
Chen Mingya	4 Truth	2 nd place in Singles Tier 4
Olivia Ng Wen Sze	5 Grace	1 st place in Singles Tier 1

Our Performing Arts CCAs - Brass Band, Choir and Dance Inc. have done a fantastic job in the recent SYF Arts Performance. We are very proud of their performances and would like to thank all parents who assisted with the preparation and supported the girls at the various venues.



Upcoming School Events

Date	Activity/Programme	Remarks
1 Sep (Thu)	Teachers' Day Celebrations	Please refer to this issue of OLN Connect.
2 Sep (Fri)	Teachers' Day School Holiday (Office will be closed at 5.30pm)	Non-school day.
3 - 11 Sep (Sat - Sun)	Term 3 School Holidays	Term 4 will resume on Monday, 12 Sep 2022.
5 - 6 Sep (Mon - Tue)	P6 Support Lessons	
16 Sep (Fri)	PSLE Listening Comprehension	<p>Non-school days for P1 to P5 students. P1 to P5 students will be assigned HBL on these days. The school will not admit visitors on this day. Please refer to August issue of OLN Connect for more information.</p> <p>P6 students must report to school by 8am that day.</p>
19 Sep (Mon)	Exam Paraliturgy	
26 - 28 Sep (Mon - Wed)	P6 Study Leave (Announced by MOE via PG to P6 parents on 1 Sep)	Classes are conducted as per normal for P1 - P5 students. More details will be given to P6 parents later.
29 Sep (Thu)	PSLE English	Classes are conducted as per normal for P1 - P5
30 Sep (Fri)	PSLE Mathematics	



Upcoming School Events

Date	Activity/Programme	Remarks
3 Oct (Mon)	PSLE Mother Tongue Language (MTL)	students. P6 students are dismissed at the end of each paper. P6 students who are exempted from MTL and/or not taking Higher MTL are not required to report to school on the days of PSLE MTL and PSLE Higher MTL respectively.
4 Oct (Tue)	PSLE Science	
5 Oct (Wed)	PSLE Higher Mother Tongue Language	
6 Oct (Thu)	School-Wide Learning Journey (P1 - P6)	More details will be given later.
7 Oct (Fri)	Children's Day School Holiday	Non-school day. All students are to report to school on Monday, 10 Oct 2022.
10 Oct (Mon)	Children's Day Celebration	More details will be given later.
10 Oct, 12 - 14 Oct (Mon, Wed - Fri)	P3 EYE EL and MTL Oral	To be held <u>during</u> school hours. More details will be given later.
11 - 14 Oct (Tue - Fri)	P6 GRACIA Star Challenge	More details will be given later.
11 Oct (Tue)	P3 to P5 End-of-Year Examination (EYE) English (EL) and Mother Tongue Language (MTL) Paper 1	More details will be given later.



Upcoming School Events

Date	Activity/Programme	Remarks
13 - 14 Oct (Thu - Fri)	P4 to P5 EYE EL and MTL Oral	To be held <u>after</u> school hours. More details will be given later.
17 - 20 Oct (Mon - Thu)	PSLE Marking Exercise	P1 to P2 students will report to school for lessons on these 4 days. P3 to P6 students will be assigned HBL and other tasks. Please refer to August issue of OLN Connect for more information.
24 Oct (Mon)	Deepavali Public Holidays	Non-school day. All students are to report to school on Tuesday, 25 October 2022.
26 Oct (Wed)	P5 EYE Higher MTL	More details will be given later.
27 Oct (Thu)	P3 to P5 EYE EL Paper 2 and 3	
28 Oct (Fri)	P3 to P5 EYE Mathematics	
31 Oct (Mon)	P3 to P5 EYE MTL Paper 2 and 3	
<i>We seek your understanding that there may be changes to the schedule of activities shared in this newsletter due to the evolving Covid-19 situation. Please refer to Parents Gateway and our school website (https://chijourladyofthenativity.moe.edu.sg/information- for-parents/communications/letters-to-parents) for copies of letters issued by the school.</i>		



Frequently Used Links from School Website

[CLICK TO RESET SLS & STUDENT ICON PASSWORDS](#)

[CLICK IF YOUR CHILD IS ABSENT FOR THE DAY](#)

[CLICK TO VIEW STAFF EMAIL ADDRESSES](#)

[CLICK TO VIEW PAST COPIES OF OUR LETTERS](#)

[CLICK TO VIEW CCA SCHEDULES](#)

[CLICK TO VIEW SUPPORT LESSON SCHEDULES](#)

[CLICK TO VISIT OUR FACEBOOK PAGE](#)

[CLICK TO VISIT OUR INSTAGRAM PAGE](#)

[CLICK TO VISIT COVID-19 FAQs ON MOE WEBSITE](#)

[CLICK TO VIEW UPDATES RELATING TO COVID-19](#)

