



# Welcome to CHIJ OLN

4 January 2022

CHIJ Our Lady of the Nativity  
*Simple in Virtue, Steadfast in Duty*





# Agenda

- **Support for Parents**
- **First 3 Days of School**
- **School Curriculum**
- **General Information**
- **Class Matters**





# First 3 Days of School

CHIJ Our Lady of the Nativity  
*Simple in Virtue, Steadfast in Duty*





# Activities during the First Week

## Arrival in the Morning

Day 1 (Tue) 4 January	Day 2 (Wed) 5 January	Day 3 (Thur) 6 January	7 Jan onwards
Assemble in <b>foyer/hall</b> by 7.55 a.m.  Teachers will bring pupils to <b>class</b> at 8.00am.	Assemble in <b>foyer</b> by <b>7.25 a.m.</b>  GLOW morning activities (in class) will start promptly at 7.30 am.	Assemble in <b>foyer</b> by <b>7.25 a.m.</b>  GLOW morning activities (in class) will start promptly at 7.30 am.	Assemble in <b>foyer</b> by <b>7.25 a.m.</b>  GLOW morning activities (in class) will start promptly at 7.30 am.





# Back-to-School Programme 2022

Day 2 (Wed)	Day 3 (Thurs)	Day 4 (Fri)
<ul style="list-style-type: none"><li>• Ice breaker Activities</li><li>• School Tour</li><li>• Story Time</li></ul>	<ul style="list-style-type: none"><li>• V-Ed Activity: Making New Friends</li><li>• Basic Routines (Recess)</li><li>• Recess</li><li>• Basic Routines (Morning Assembly)</li><li>• Admin Matters (collection of books &amp; files)</li><li>• Teacher Expectations</li></ul>	<ul style="list-style-type: none"><li>• Talk by AEDs (Counselling &amp; LBS)</li><li>• Art &amp; Music Activity</li><li>• Recess</li><li>• Admin Matters (collection of books &amp; files)</li><li>• Setting Class Rules &amp; Expectations</li></ul>





# IMPORTANT Reminders

Have you installed the following :

- Parents Gateway mobile app (all letters to parents will be sent via this app)
- Tok!Tok! Messenger app (teachers will use this app to communicate with parents)





# IMPORTANT Reminders

Have you informed your daughter's Form Teacher of the dismissal arrangement?

- School bus number
- Name of Student Care (school or external)
- Pick-up at side gate 2 (only parents / care-givers with **'P1 Dismissal Pass'** will be allowed to enter the school to pick child from ISH )





# Dismissal during the First 4 Weeks of School

- Dismissal from 4 - 7 January will be at ISH via Side Gate 2
- Parents / Caregivers would have to wait outside Side Gate 2
- Pupils will be dismissed according to their class
- Security Guard will announce the dismissal of P1 students, class by class
- Dismissal will begin from **12.45/12.55 pm.**
- For Weeks 1 - 4, dismissal will continue to be at Side Gate 2 at 1.00 pm.







# Dismissal Pass

## CHIJ OLN - P1 Student Dismissal Pick up arrangement via Gate 2

*\*For Tuesday 4 January – Friday 28 January only\**

Name of child: \_\_\_\_\_

Child's class: Pri 1 \_\_\_\_\_

Please tick (✓) accordingly:

- ☐ I will pick my child up at dismissal
- ☐ I authorise a caregiver to pick my child up at dismissal

• Name of caregiver: \_\_\_\_\_

• Relationship of caregiver to child: \_\_\_\_\_

\_\_\_\_\_  
Parent's signature

\_\_\_\_\_  
Date





# Daily School Dismissal (From 31 January onwards )

Day	Time	Venue
Monday, Tuesday, Thursday & Friday	1.00 pm ( 1C,1F,1G, 1H ) 1.10 pm ( 1J,1L,1P, 1T )	Side Gate 2
Wednesday	12.50 pm ( 1C,1F,1G, 1H ) 1.00 pm ( 1J,1L,1P, 1T )	Side Gate 2





# School Curriculum

CHIJ Our Lady of the Nativity  
*Simple in Virtue, Steadfast in Duty*





# A Holistic Curriculum that goes beyond the academics

## Character focused

- Values-education lessons
- CCE & Social Studies lessons
- Values-in-action programmes
- Field Trips & activities
- Daily assembly e.g. pre-assembly talks

## Physical Development

- PAL Programmes e.g. Sports & Games
- Physical Education programme
- School Events e.g. Games On

## Citizenship & Culture

- Commemorations e.g. International Friendship Day & National Day
- Mother Tongue Fortnight
- Celebrations e.g. Hari Raya Puasa & Deepavali

## The Arts

- PAL Programme e.g. Music, Dance, Drama, Art
- Art Programme
- Music Programme (Music Comes Alive!)





# Subjects at Lower Primary

- English Language
- Mathematics
- Mother Tongue  
(CL/ML/TL/ NTIL)
- Character and Citizenship  
Education (CCE)
- Social Studies
- Art
- Music
- Physical Education (PE)
- Programme for Active Learning (PAL)  
Art / Music / Sports & Games /  
Drama / Outdoor Education
- Together Learning about Christ (TLC)
- Form Teacher Guidance Period  
(FTGP)





# English



## Strategies for English Language Learning and Readings

Children who love reading and have a strong foundation in the English Language

STELLAR comprises 3 main strategies:

- Shared Book Approach (SBA)
- Language Experience Approach (LEA)
- Learning Centres (LC)





# STELLAR in the English classroom

- Teaching and learning of English Language using more speaking and listening activities
- Children learn reading and writing using rich and interesting books, with discussions led by the teacher
- Using hands-on activities to infuse joy in learning







## Focused reading using Big Books

- reading for enjoyment
- reading for knowledge

## Experience joy in learning







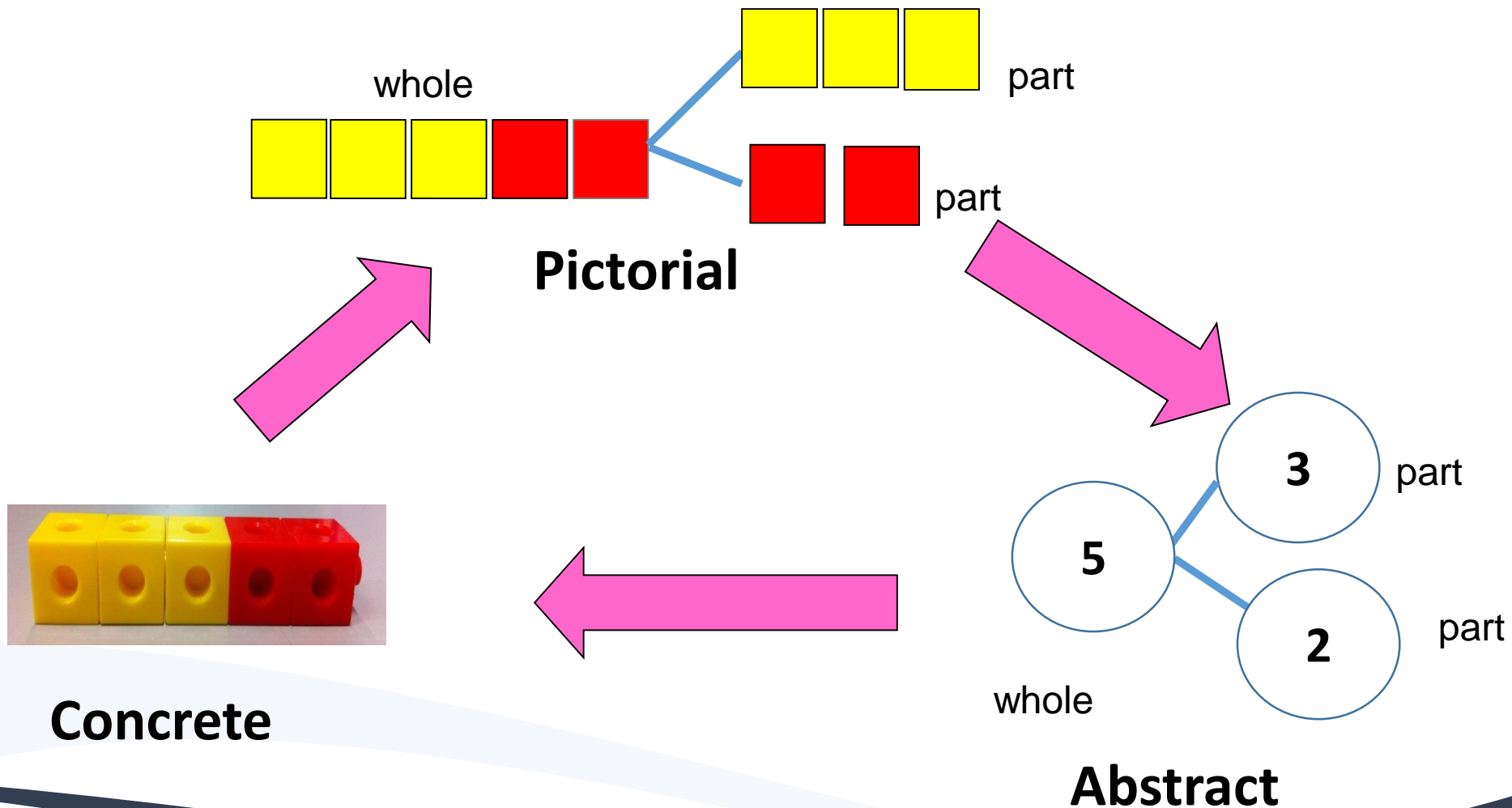
# Mathematics

Teachers adopt the Concrete-Pictorial-Abstract teaching approach. This includes meaningful activities with concrete materials / teaching aids for our pupils.





# CPA (Concrete-Pictorial-Abstract) Approach





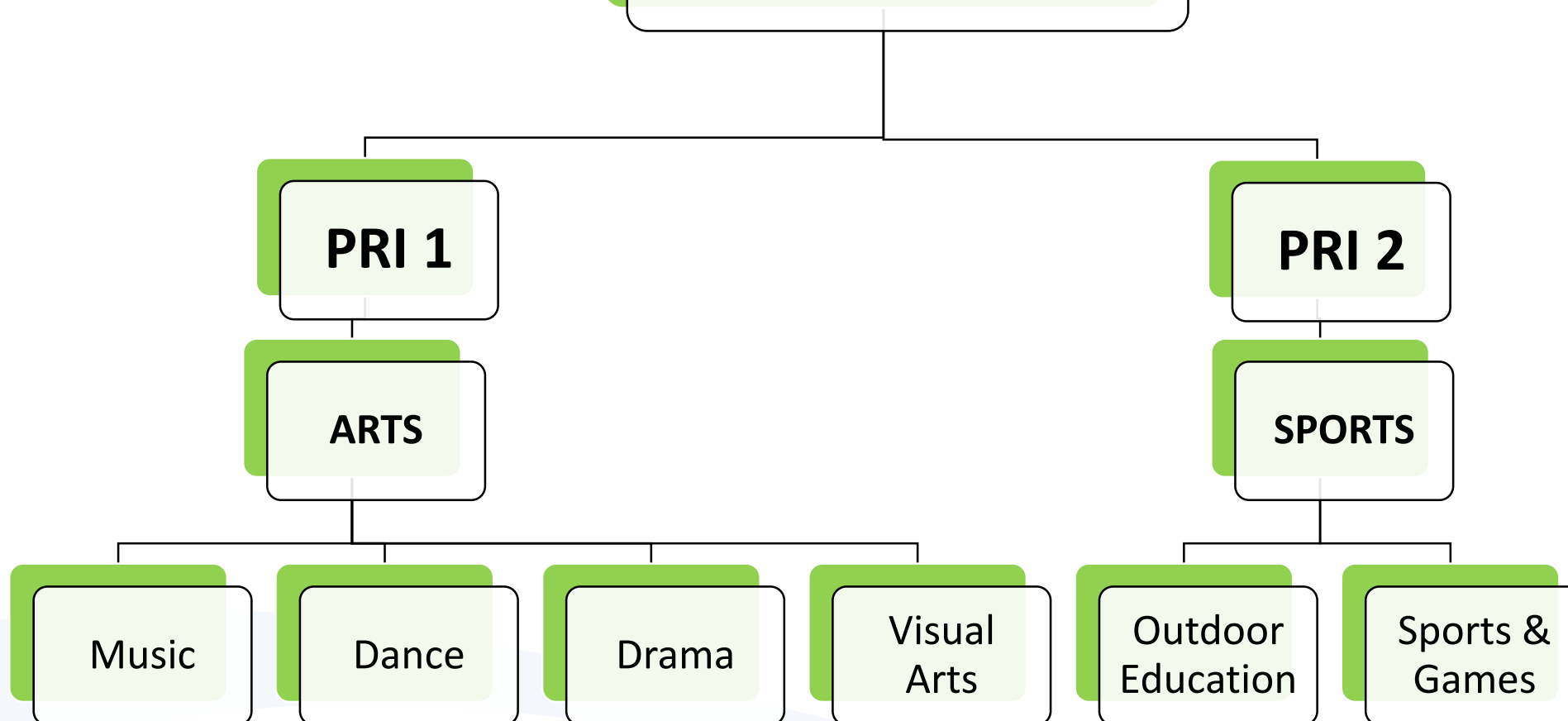
# Programme for Active Learning (PAL)

- Addresses the need for greater emphasis on non-academic programmes for P1 and P2 pupils
- Comprises non-academic programmes conducted within the curriculum
- PAL@OLN consists of modular activities in the areas of Sports & Games and Outdoor Education (P2) as well as Performing (Dance, Drama, Music) & Visual Arts (P1).





# PAL @OLN 2022





# General Information

CHIJ Our Lady of the Nativity  
*Simple in Virtue, Steadfast in Duty*





# Attendance

- It is a good habit to be early and we encourage our girls be punctual to school.
- Pupils who are **not in class at 7.30 a.m.** will be considered late.
- **For persistent latecomers:**
  - 3 times or more in a semester → Letter of Warning
  - 12 times or more in a semester → Reflected in the Report Book
  - 20% of no. of days in a semester → “Fair” conduct grade

More information can be found in the school organiser.





# Absence from School

- All absence from school must be covered with a Medical Certificate (MC).
- MCs must be given to the Form Teacher (FT) on the day the student returns to school.
- If an MC is not available, parents must write a note to FT to explain the child's absence.
- There is a limit of 3 such letters per term.





# School Rules

## Grooming :

- Knowing how to remove and put on school pinafore, belt, shoes and socks.
- Learn how to tie hair into a simple ponytail.
- Basic toilet hygiene

## Tok Tok :

- You may communicate with the teachers during the school hours from **7am – 6pm.**







# School Rules

- Pupils are to wear only white school socks and shoes.
- Pupils can wear simple ear studs only. Loop earrings are not allowed.
- **Only simple and plain black hair accessories** are allowed.





# Handphone Policy

- Mobile phones are not encouraged.
- Parents are to fill up a 'Request to bring mobile phones' form for your child (sent via PG).
- Mobile phones must be switched off during school hours.
- The school will not be responsible for any loss or damage (to the phone).
- Girls must use their handphone responsibly or permission will be revoked. This applies to smart watches too.

## Smart Watches

- Girls are not allowed to wear smart watches or watches that have recording functions. Only the POSB Smart Buddy is allowed.

More information can be found in the school organiser.





# POSB Smart Buddy programme (not compulsory)

The Smart Buddy watch system will enable your child to :

- Use cashless payment for her canteen meals
- Buy stationery from the bookshop
- Pay for purchases from retailers that accept NETS payments

You will also be able to monitor her expenses and encourage her to adopt a saving habit.

Registration link :

[www.posb.com.sg/chijoln](http://www.posb.com.sg/chijoln)

(Processing time is about one month)





# What you / your child will be receiving this week:

- Class Timetable
- School Organiser
- Oral Digital Thermometer (ODT) - issued but will be kept by the FT
- Welcome Letter (Parents Gateway)
- OLN Connect for January (Parents Gateway)





# Be prepared for school :

To bring the following **daily** :

- ☐ a simple pencil case with at least 2 sharpened pencils, an eraser, a short ruler & a sharpener with container
- ☐ a box of coloured pencils (8 – 12 colours)
- ☐ the school organiser
- ☐ a storybook
- ☐ a clear file for letter(s)/homework
- ☐ purple spelling file
- ☐ mini whiteboard set (can be left under her desk)
- ☐ healthy snacks





# Communication between School & Home

- School Organiser
- Make appointments
- Email / write notes
- Call the school (GO)
- Tok!Tok! Communicator
- Parents Gateway

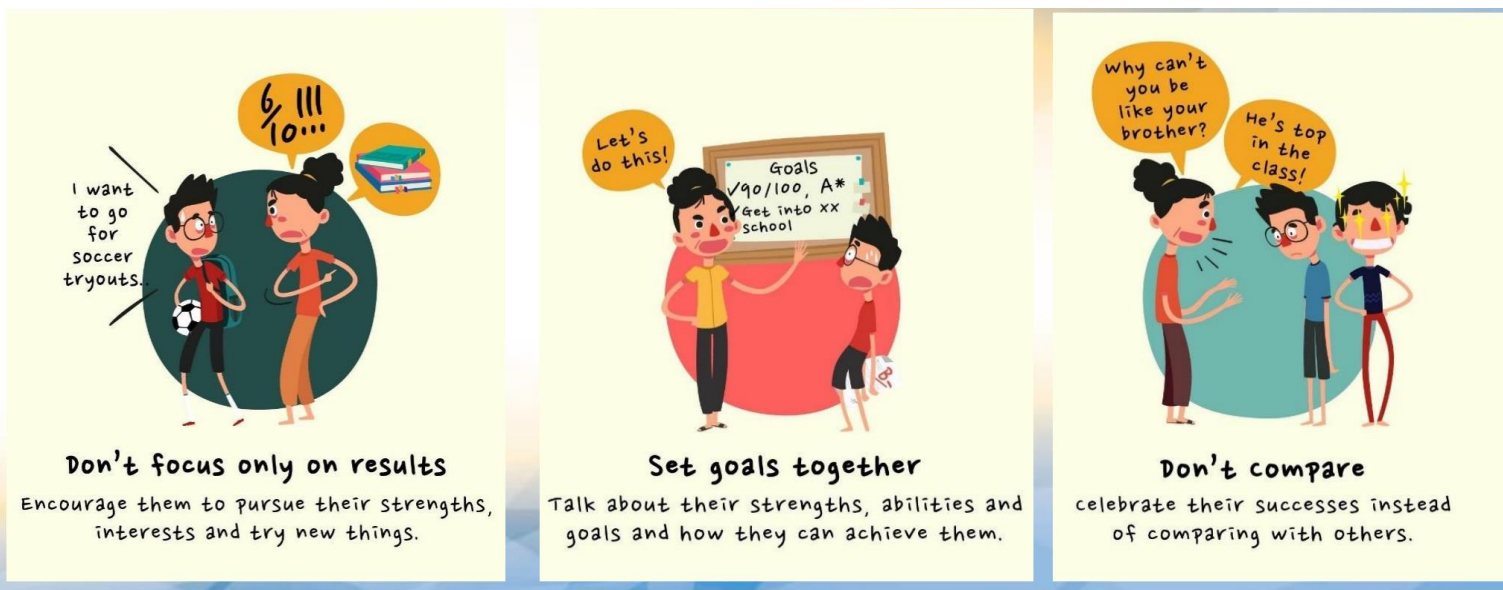




# Parent's Support & Partnership

## Encourage Joy of Learning!

- Not over-emphasising academic performance
- Focus on your child's journey, rather than compare them with others







# Give your child/ward the time and space to deepen learning

**I'M NOT WASTING TIME...**




**...I'M PLANNING MY FIRST NOVEL!**

Learning happens in different ways.

Ministry of Education Singapore

**I'M NOT DISTRACTED...**



**...I'M LEARNING HOW PLANES FLY!**

Learning happens in different ways.

Ministry of Education Singapore

**I'M NOT IDLE...**



**...I'M DESIGNING A FUTURE CITY!**

Learning happens in different ways.

Ministry of Education Singapore





# CHIJ OLN Partner- Methodist Welfare Services (MWS)



## The Importance of Positive Parenting



Prepared by: Methodist Welfare Services' Family Support Programme

CHIJ Our Lady of the Nativity  
*Simple in Virtue, Steadfast in Duty*





## Dates to take note of:

Dates	Event	Remarks
Saturday, 8 January	Helping our Children Transit into Primary 1 with Ease.	Registration link <a href="https://tinyurl.com/pkxykeae">https://tinyurl.com/pkxykeae</a>
Friday, 21 January	P1 Networking Session	Meet Form & Co-Form Teachers via Zoom
Saturday 19 February	Power of Positive Parenting	Registration via PG
Saturday 26 February	Raising Confident & Competent Children	Registration via PG
Saturday 5 March	Raising Resilient Children	Registration via PG



# Communication with Lower Primary Year Head

**Mdm Hanizah** ([hanizah\\_abu\\_samah@moe.edu.sg](mailto:hanizah_abu_samah@moe.edu.sg))

We look forward to partnering you in your child's  
education journey!





# Thank you !

